



Johnson Close | | WS15 2PR

£195,000

 **Webbs**
estate agents

Summary

**** POPULAR LOCATION ** IDEAL FOR FIRST TIME BUYERS ** LIVING ROOM ** OPEN PLAN KITCHEN DINING ROOM ** THREE BEDROOMS ** BATHROOM ** REAR GARDEN ** CLOSE TO AMENITIES ** VIEWING ADVISED ****

WEBBS ESTATE AGENTS are pleased to market this three bedroom, mid terraced home, located in a popular area of Rugeley on Johnson Close. Viewing of the property is advised to appreciate the size and space on offer. The property is situated close to amenities, schools, useful transport links and much more! The internal accommodation briefly comprises; entrance hallway, living room, open plan kitchen dining room, three bedrooms and a family bathroom. The property also boasts a good size rear garden and off road parking can be an option.

Key Features

- POPULAR LOCATION
- IDEAL FOR FIRST TIME BUYERS
- THREE BEDROOMS
- LIVING ROOM
- OPEN PLAN KITCHEN DINING ROOM
- REAR GARDEN
- CLOSE TO AMENITIES
- VIEWING ESSENTIAL

Rooms and Dimensions

Entry

Living Room

13'0 x 14'6 (3.96m x 4.42m)

Kitchen Dining Room

9'7 x 14'5 (2.92m x 4.39m)

Landing

Bedroom 1

14'2 x 8'3 (4.32m x 2.51m)

Bedroom 2

9'4 x 8'4 (2.84m x 2.54m)

Bedroom 3

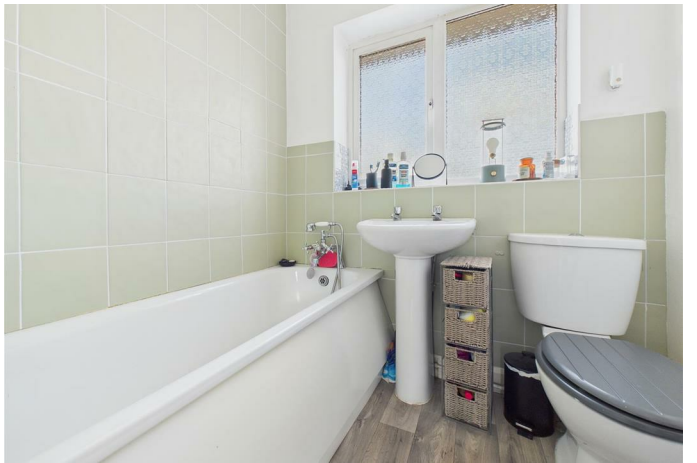
7'5 x 5'9 (2.26m x 1.75m)

Bathroom

5'4 x 5'10 (1.63m x 1.78m)

Identification Checks (R)







Webbs Estate Agents - endeavour to maintain accurate depictions of properties in Virtual Tours, Floor Plans and descriptions, however, these are intended only as a guide and purchasers must satisfy themselves by personal inspection.

